

The Pagan Federation



Dark Mirror

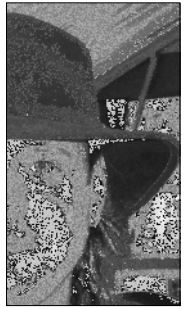
59

Yule 09/Imbolc 10

Devon, Cornwall, The Scilly & The Channel Islands

Welcome friend!

Welcome to the latest issue of Dark Mirror, I hope you find it useful. We & the localised world have entered into a state of rest, a personal time to reflect on what has gone & time to look deep within for truth. From here new life begins and I wish you well on your journey. Peace be with you, Graham.



PF Devon & Cornwall District Officers

District Manager (DM) : VACANCY !!

Caretaker (DM): Keith Tovey 01702 304285 email: keith.tovey@blueyonder.co.uk

Regional Co-ordinators (RC)

Devon : Sowelu (01392) 433909 email : sowelu@blueyonder.co.uk

Cornwall : Nigel Fenlon - 07971 854917

Channel Isles : Oak Leaf – email : oak_frost@yahoo.co.uk

The RC's deal with day to day contact with members. Contact them about membership enquiries or other matters you wish to discuss, by phone, email or letter to the regional address. If you want to run a Moot or Study Group, contact your RC.

District Administrator : Sowelu
Community Officer : Cassandra Latham
Newsletter Editor: VACANCY
Conference Organiser : Levannah Morgan

The **Local Organisers** run moots, events and groups. Contact them for details of local events.

Exeter : Viannah - 07742 142066
South West Devon & Plymouth : Patrick - 01752 562769
North Devon : Trudy - 07988 410815 email: trudiebrown@fsmail.net
South Devon : VACANCY
North Cornwall : VACANCY
Penwith : Sarah - 01736 787522
Channel Islands : Oak Leaf - oak_frost@yahoo.co.uk
Tavistock: Micehele - 01822 617903 ffery@googlemail.com

DISCLAIMER:

Dark Mirror is the District newsletter of the Pagan Federation Devon, Cornwall and the Isles (PFDCI) and is only available to members of the Pagan Federation. The views and/or opinions expressed within this publication are not necessarily those of the editors, printers, PFDCI or the Pagan Federation. Items within this publication should not be seen as an endorsement of the events or products, and no responsibility can be accepted by us for such items. Copyright 2009—Items remain copyright of authors and are reproduced here with kind permission.

DM's Bit!

By Keith Tovey— Caretaker DM

Welcome to Issue 59 of dark Mirror. I'm still here ladies and gents, acting as your caretaker DM! I'm rather surprised that I've not had anyone who's interested in taking on the District Managers job getting in touch with me! I've had a couple of people come forward to offer support, but no one who actually wants to take on the role! Now, I know that you're out there in the District somewhere oh noble volunteer for the role, don't be shy about it, just contact me to discuss the role. Perhaps there is something that is worrying you about the role that I can put to rest for you? The DM's job is an important role and it need to be filled by someone who actually knows Devon, Cornwall and the channel isles! Not an Essex man like myself who, although he is committed to the health and well being of the PF as a whole, has never even set foot in either Devon or Cornwall (mind you—I have spent a while on Jersey & Guernsey, so perhaps I'm moaning too much). Come on, talk to me!!!! This is a strong District and it needs a local DM!

So, what have I been up to since last we spoke? Well work has been pig, but hey, that's work for you :-)
Thing's PF continue a pace, my duties and District Liaison Officer keep me off the streets and my own magical

work has been rather hectic during the Samhain days. I conducted the Samhain rite for my own local moor (the Paganlion of Southend on Sea) and we all had a wonderful party afterward. I always insist on Samhain being a time of light for the dark (if that makes any sense to anyone?)

Anyway, I hope that I have not rambled on too much? Don't forget that we in the District team are always here if there is anything that's worrying you or there's anything that we can do for. Also, if there's anything that you feel that you can be doing for the District, just get in touch and we'll be more than happy to take any help that we can get!

Bright Blessings

Keith

PS ~ If the newsletter has got to you late, please accept my personal apologies! If had to take on editing the newsletter myself & as you may have guessed. I do tend to rather be a busy chap! If being newsletter editor is something that might interest you—please get in touch!

Investigating Discrimination.

The DFF are trying to undertake an investigation into incidents of Discrimination based upon Religion and Belief in Devon. This will be used to help inform Local Government policy in Devon over the next few years.

Please contact us with your stories so that your voice is heard!

We would like to hear from anyone who has suffered (or believed that they have suffered, or feared) discrimination on the grounds of Religion or Belief in Devon. Whether this is a major incident that led to police involvement, assault, harassment, name-calling or abuse, workplace or school bullying, workplace or school regulations, attitudes expressed in the (local) media or in conversation, access to goods and services, vandalism, we would like to know about it. All contributions will remain anonymous unless you specifically state otherwise.

We would like you to contact us with;

The name of the person sending the information. (Please indicate if anonymity is not required) & some contact information. The Religion or Belief. An outline of the events. A de-

scription of how this made the person feel. A notification if any agencies (Police, Social Services, Schools etc) were informed. Any following events or outcome.

Please send this information to us at devonfaithsforum@hotmail.com or by post to:

DFF, c/o The Old Deanery, Exeter EX1 1HS

Many thanks for your contributions – please pass this information onto anyone else that you think might like to contribute.

Inter Faith

The Pagan Federation are represented on the Devon Faiths Forum, who as you may have heard are undertaking some research into the experience of discrimination on the grounds of religion and belief in Devon.

If you would like to contribute to this research then **please get in touch!**



Interfaith Week, No- vember 16th- 20th

The Devon Faith & Belief Forum organised an event for its members to celebrate the diversity of religious and spiritual activity in the county. Two of your Devon PF team went along to represent paganism in our corner of the south west for the evening, and received a really warm welcome from all quarters. Mingling with the elders of various religions was amazing, how often is it that it is not *what* we believe but simply that we actually *have* beliefs which confuses our friends and relatives? In a society which is now largely secular, to be surrounded by people who are passionate about their faiths was refreshing. The evening involved speakers giving short talks on SACRE (Standing Advisory Councils on Religious Education) introducing ideas about advising the government on the national curriculum, Childline seeking to recruit volunteers from wide religious backgrounds, to ensure they are able to meet the diversity of the region, demonstration of beautiful Indian sacred dance, and hilariously narrated Sikh turban winding, and finally a per-

formance by the interfaith choir; the blending of many voices, joining in songs from many cultures, including a beautiful pagan chant "Ancient Mother, I hear your calling, Ancient Mother, I hear your song, Ancient Mother, I hear your laughter; Ancient Mother, I taste your tears".

Every one was friendly and curious, and the repeated exclamation was "wow the Pagan Federation, so what do you do?" This was more difficult to answer than at first glance, since in speaking for paganism I am speaking about many traditions and many individuals. In one sentence I was trying to articulate the work of the PF, my own 'home' practices, those of the coven I work with, or those I do on behalf of the pagan community. Simply trying to communicate the range of belief that this umbrella term 'paganism' covers - including druids, heathens, shamans, witches, wiccans, eclectics, occultists, classicists, and new age beliefs, ideas and practices, (and this is the short list) - meant forgetting to take breath... Then there was constantly clarifying that generally;

'most but not all' believe in deity which can be male and/or female,
'most but not all' celebrate 8 seasonal festivals,
and 'most but not all' give reverence to nature.

Since pagans in general believe that 'all paths to the divine are sacred' and

seek to recognise many types of divinity, interfaith connections are a natural and positive extension of our beliefs. I had a great evening and look forward to being more involved with the interfaith work in Exeter.

Viannah
LO for Exeter

CD review

***Andraste* by Oak**

Having worked in the performing arts, when someone I know hands me a CD of their own music my instant reaction is to stifle the cringe, and nod, smile and hope they never ask for an opinion. So when Oak of PF Wessex passed me his new album *Andraste* I wasn't thinking of writing a review of it. Of the eleven tracks on the CD, four are by Oak himself, including the title track 'The Hare' -a song to the hare goddess Andraste -a sprightly tune which like the hare on the front cover, trippingly leaps from the CD. The CD is very soft and simple with Oak's vocals and guitar accompaniment throughout, which makes for an intimate sound. Evidently Wessex PF are a talented bunch since the artwork of the front cover is by Yarrow of the Taunton Moot. For more information contact summersetoak@aol.com

Viannah
LO for Exeter

Vacancies in Devon, Cornwall and the Isles

We are looking for many people to volunteer to help out the District. As you know (from the DM's Bit), first and foremost, we are after a new District Manager!

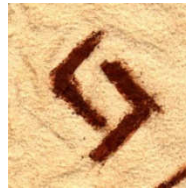
Secondly, we are after a new newsletter editor. Someone who can draw together this very magazine and get it to the person that does the distribution and printing in good time to a quality that we have come to expect.

We are also after Local Coordinators for both South Devon and North Cornwall, so if you run a Moot or other Pagan gathering in either of those areas and would like to help PF out, please get in touch.

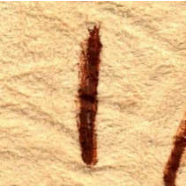
To discuss any and all of the above, please contact Keith Tovey (your Caretaker District Manager) at keith.Tovey@Blueyonder.co.uk.

Keith Tovey
Caretaker DM

Runes for the Ritual Year



Yule/Winter Solstice



Isa (28th Nov-12th Dec)

Correspondences: Wolf, Blackthorn, Diamond.

Isa is the primal ice and the slow, relentless, grinding energy of a glacier. The associated deities are the Frost Giants, Skadi the Mountain Giantess and also the Norn Verdandi in her capacity to keep things as they are. Ice is the densest form of water and is static, resistant to change and prevents unrestrained growth. It is used to cancel heated aggression and freeze the actions of others. Isa represents a dormant phase when challenged by unfavourable conditions. Caution is required to 'cross over the ice' be still, gain control over the self and find your point of gravity. Use this rune to stop the influence of bad habits and form a barrier against attack. It grants glacial clarity, inward focus, and strength in solitude.

Jera (13th -27th Dec)

Correspondences: Eagle, Yule Boar, Oak/Holly, Moss Agate.

Rune of the year's completion, it is a symbol of movement and change straddling the winter solstice looking backwards and forwards at the hinge of the solar year. Jera demonstrates the psychic nature of life, time and the rotation of the seasons as they fulfil and regenerate. It is the principle of a good harvest, rune of long-term improvement and change for the better with the return of the Sun. Jera signifies a period when events come to fruition, peace and prosperity. The God Frey and the Yule boar were invoked to bless the land and the people. Jera is a slow building rune concerning karmic returns, legal matters and productive results including fertility magic.



Eoh Eihwaz(28th Dec-12th Jan)

Correspondences: Spider, Yew, Hemlock, Smoky Quartz.

Eoh is the evergreen yew signifying supernatural power of great age and immortality. It represents Yggdrasil the world tree that maintains the manifestation of life-force in winter. Legend has it the tree can access the souls of those who have gone beyond the veil, it is said the yew contains everything. The spider web links this rune to the wise weaver goddesses who weave the destinies of all. The Goddess Frigg's spindle is made from yew to represent the undying axis of the cosmos. On a deep level Eoh symbolises the lasting endurance you will need to win enlightenment, like the God Odin's ordeal upon the tree to win knowledge of the Runes. The 13th rune signifies the increasing coldness that comes as days get longer while death still stalks the land. Yew berries are poisonous and were used by witches to fell their enemies, protect property and an ingredient in witch bottles to keep stalkers and abusers at bay. Rune of endings, closure and confronting our own shadow.

Oracles, secrets, chance and the casting of lots. This rune is deeply connected with the weavings and working of fate both universal and personal and so belongs in the care of the Norns. We all have free will within the constraints of our personal fate and our inter-connection with the universe. Even the smallest acts alter the fabric of existence, sending out ripples and repercussions that will later return for good or ill. Peorth is also the birthing rune of the year, bringing things magically into being, from hidden potential into physical manifestation. It is the bringer of knowledge from the Well of Memory and can bring meaningful insight to puzzling inner experiences.



Imbolc



Peorth Pertho (13th-27th Jan)

Correspondences: Owl, Yew, Elder, Onyx.

Algiz Elhaz (28th Jan-11th Feb)

Correspondences: Swan, Elk, Rowan, Black Tourmaline.

Rune of powerful protection, its shape represents the strength and potency of the Elk. Magically this is the most powerful defensive warding sign, repelling all evil, offering personal protection against physical and psychic attack and equally protective for buildings and vehicles. Elhaz

promises protection against all forces or influences, known and unknown, that conflict with us. It is the power of the human striving towards divine qualities. Through it we encounter Heimdall the Guardian of the Rainbow Bridge, born of nine women. He possesses a supernatural clarity of vision and hearing; he is the deity of heightened spiritual awareness whose name means 'world radiance'. May we hear his whisper in our ear that saves us from disaster!



Sol Sigel Sowulo (12th -26th Feb)

Correspondences: Hawk, Bee, Juniper, Bay, Mistletoe, Sunstone.

Sigel represents and channels the vigour of the sun and its light to help achieve our objectives. This rune resists the forces of death and darkness with the triumph of its beneficial magical will, warmth and spiritual light. Victory by magical means and victory of the spiritual will on the journey to the divine. The Goddess Sunna drives the Sun Chariot across the skies, she bears the all healing mistletoe and the Sunstone used in magical healing practices. Sigel is the channel of strong, straightforward sexual energy representing the con-

tinued spirit of the human life-force, birthed when a tree was struck by lightning. Sigel is the rune of true light, overcoming disorientation and bestowing safe passage in the situation ahead as we realise our truest aims.

By Michele Colins
fferyllt@googlemail.com

Dark Mirror Correspondence Course

The Dark Mirror Correspondence course is available free to all Devon, Cornwall, Isles of Scilly and Channel Islands members. It is suitable for complete beginners or for more experienced Pagans looking to add structure to their spiritual journey. There is a Wiccan or Druid version. Please contact Sowelu for more information at : - Sowelu@blueyonder.co.uk, or via the PO Box address.

The Devon Handfasting Network

If you would like to find out more, or arrange a Handfasting, then please contact Levannah Morgan, the co-ordinator. Email Levannah@btinternet.com or tel **07778 304687** or write via the PO Box address.

From the IT Officer

Our News page on the web site has been somewhat 'moribund' over the last few months. The original idea was that it would only be used for news specifically *about* the PF but discussions have been held about widening the scope of the page. To this end, I'm looking to recruit a small team of 'newshounds' to sniff out the latest, worldwide, stories of pagan relevance and bring them to a wider audience. This exercise would require any stories to be precis'd, for reasons of copyright they cannot just be simple cut/paste jobs from other web sites - some thought and effort is involved. So if you have a hour or so to spend on-line each week, and would like to help the PF with news dissemination, please contact me at itmgr@paganfed.org - familiarity with Word-press would be useful but is by no means essential.

Our Ritual, Memories of Beltane

Along the ancient track we walked
The moon shone full and clear
The woods ahead were still and dark
But none of us felt fear

Across the moonlit meadows
Beside the silent stream
We Witches walked together
United but unseen

Around the priory ruins
Echoes of things past
Beneath the giant yew we stood
The circle then was cast

The candles lit, the quarters called
We each recalled the powers
Of rituals and Sabbats past
Of mead, mooncakes and flowers

The tree loomed large above us
Festooned from trunk to crown
A sentinel, it guarded us
And looked benignly down

They joined us then, the elements
All of them were there
Invited and most welcome
Earth, water, fire and air

With one mind we worked our charms
The circle now enchanted
As each of us wrote for a spell

And knew it would be granted
Bewitching thoughts I'll treasure
Of May and ancient wisdom
How we touched souls with all our
Gods
And celebrated with them

© Eileen Blacklock 2003



Moots in the District

NB : It is always wise to contact the Moot Organiser prior to attending a Moot. Whilst details are correct at the time of going to press, these are subject to change with very short notice.

Devon Moots

EXETER PF MOOT Meets at the White Hart on South Street from 8pm. 1st Wednesday monthly. FFI contact Viannah on 077421 42066 or Viannah@hotmail.co.uk

SOUTH WEST DEVON MOOT - meets in the Stoke area of Plymouth, held on 2nd wed of the month 7pm. FFI contact Patrick on 01752 562769 or Michele at fferyllt@googlemail.com

Tavistock West Moor Moot Meets on 2nd Thursday of the month. A place to share Pagan news and events, topical discussions and simple ritual. During warmer months we plan visits to the nearby moor and sacred sites to connect with the Spirits of Place. Contact Michele on 01822 617903, or email fferyllt@googlemail.com

DEVONPAGANS is an egroup for all pagans in Devon or nearby. [Http://uk.groups.yahoo.com/group/Devonpagans/](http://uk.groups.yahoo.com/group/Devonpagans/) We hold regular moots (in a house not a pub!), on the first Friday of every month. All paths are welcome. These are mainly social occasions but we do discuss serious things and have had some visiting speakers on particular topics. We always end by sharing food and drink that we have brought. Good fun! All paths are welcome. The moots take place in Bradninch near Exeter, please contact Hedge (hedge@devonpagans.org) for directions.

Paignton Pagan Moot Meets on the first Tuesday of the month from 7.30pm at the Blagdon Inn. For further details contact Clive clivedragon@hotmail.com or 07964439294.

NORTH DEVON MOOT. Meet the first Wednesday of each month at the skittle alley of the Chichester Arms, Pilton Street, Barnstaple from 8pm. For further information contact Rosie on 07757049369 or reb@northdevonpagans.co.uk or have a look at the website www.northdevonpagans.co.uk

Cornwall Moots

Penwith Pagan Moot – Meets on the second Tuesday of each month, 7.15pm at the Stella Maris Centre behind Healing Star at the top of Causeway head, Penzance. Moots are for news, information and a different topic each month. We also hold open rituals for the eight seasonal festivals and assist the Cornish Ancient Sites Protection Network with clear-ups at Ancient Sites in Penwith. Contact – Sarah on 01736 787522 vivianatfarwest@supanet.com, or Dave on 01736 787230 tarewaste@yahoo.co.uk or Eve 01736 793905 meadowsweetl-@tiscali.co.uk Or visit our website www.penwithpaganmoot.co.uk

Pagan Paths – Meets on the 1st Wednesday of each month, 7.30pm, Bodmin area. Warm and friendly group. Sabbat celebrations, sacred sites outings, moots and local groups, workshops and talks. Contact Wendy on 01208 832977 paganpaths05@aol.com

Taunton moot diary

Programme of talks and workshops for 2009/2010:

December 14th 2009 - "Yule Folk Night and Stampede Raffle" - calling all musicians and singers! An open floor evening of cheering traditional music, along with our now traditional "stampede raffle". As usual, bring along as many gift wrapped prizes as you can (small or large, useful or useless) - all proceeds will go to charity.

January 11th 2010 - "Reincarnation" - a workshop with Roy Snelling, Taunton Moot regular and Reiki Master, covering aspects of reincarnation, progression of the soul and the collective consciousness (with audience participation encouraged!).

February 8th 2010 - details to be confirmed.

March 8th 2010 - details to be confirmed.

Wiccan Study Group - monthly meeting starting Feb 2009. Basic intro to Wicca and working with the wheel of the year. Limited places. Contact Yarrow on 01823 283742/ yarrow.taunton@googlemail.com to apply.

Free Email/Correspondence Course in Wicca/Natural Magic - for info contact Oak.
SummersetOak@aol.com

The Taunton Moot

We meet every second Monday of the month from 7.30pm onwards in the upstairs meeting room at Mambo Wine Bar (formerly Millers), Mill Lane, just off North Street (near Debenhams and opposite the old main Post Office) Taunton TAI ILN.

Free admittance to all with a small donation for speaker's expenses encouraged. Moot details available to view on the Wessex Research Group Network website

www.wessexresearchgroup.org
and the Wessex Pagan Federation website :-

<http://pfwessex.org>

Consider joining the Pagan Federation to find out more about local Pagan events, groups and moots and meet other Pagans in your area.

For further info on the Pagan Federation's work contact Yarrow or Oak on SummersetOak@aol.com.

SE Cornwall Moot?

Jane Booth

For some months I have been thinking of setting up a Moot in the Liskeard/Looe area but from experience with other groups, I just wonder if there would be any interest. Unfortunately there is no public transport in the area after 6.30pm any day which may be a deciding factor.

If there are any other PF members in or around SE Cornwall who might consider attending a moot on perhaps a bimonthly or quarterly basis do please get in touch via the editor.

A big help needed!

We are in serious need of help to put our 2010 conference flyers & posters into shops, cafes & websites.

(Especially in Cornwall!)

Can you spare a short walk around town to pop them up?

If so please contact Sowelu at sowelu@blueyonder.co.uk

Why's this Colum Empty?

Well, it's always the way of things with District newsletters that we are CRYING OUT for articles of interest to the local Pagan Community.

SO— if you have things that you would like to say to the rest of the District about things of Pagan interest. Be they views about Pagan practice, recommendations about places that you have been that you would like to pass on, artwork that you would like to see in print, reviews of books or music that you like to pass on or event notes about Pagan sites on the internet that you'd like to pass on. Then that Dark Mirror would like these things.

Articles should be in some kind of PC format and submitted to keith.tovey@blueyonder.co.uk. We can't pay you for these articles but we will offer you a big vote of thanks!

More overleaf— but as Caretaker DM, it's my job to ask you for your articles and hope that you'll join in!

Keith

Caretaker DM

Dark Mirror

Submissions

Dark Mirror is read by 100's of Pagans & anything to do with Paganism is most welcome. Please share your thoughts, poems, stories, views opinions.

Send your submissions in any format to :

**Dark Mirror,
PF Devon & Cornwall,
PO Box314 Exeter, EX4 6YR**

Or email me at: keith.tovey@blueyonder.co.uk & put "Dark Mirror" in the subject line.

Advertising Rates: Small lineage ads from individual PF members are **free!**

We can also display ad space at the following rates:-

Full Page = £10, Half Page = £5, Quarter Page = £3 All display ads are run for 4 consecutive issues

DEADLINES FOR DARK MIRROR

I thought that it would be best if, rather than simply saying what the deadline for the next Dark Mirror is, I gave you the complete set of the years deadlines for the newsletter. Get your articles by the deadline & I'll do my best to get in the magazine, which aims to be with members by the relevant festival

Spring Equinox (Ostara) Edition: Deadline 01/03.

Summer Solstice (Litha) Edition: Deadline 01/06.

Autumn Equinox (Mabon) Edition: Deadline 01/09.

Winter Solstice (Yule) Edition: Deadline 01/12.

For Sale

Hand-held frame drums made with ethically sourced deer or horse skin.

www.all-as-one.co.uk

or tel. Sam on 07971 179086



The Museum of Witchcraft

Phone 01840 250111

museumwitchcraft@aol.com

www.museumofwitchcraft.com

Educational, Entertaining, Enlightening

The Museum of Witchcraft, The Harbour,
Boscastle, Cornwall. PL35 OH

Tarot Readings

In person, by phone, mail, email, webcam

01579 340796

www.tarot-zone.com

www.MercuryRisingBooks.com



HUNDREDS OF BRAND NEW BOOKS AT UP TO 70% OFF!

Also...

Tarot and Oracle Sets and Decks
Crystal Runes
Dowsing Pendulums

10% Discount on first online order.

Subjects Include:

Wicca, Witchcraft, Druidry, Celtic, Occultism, Shamanism, Divination, Nature, Ecology, Crystals, Faeries, Angels, Astrology, Novels, Spirituality, Reincarnation, Ley Lines

Authors include:

Ted Andrews, Kit Berry, Rae Beth, Scott Cunningham, Nevill Drury, Cassandra Eason, Brian Froud, Dion Fortune, Marian Green, Glennie Kindred, John & Caitlin Matthews, Kenneth Meadows, Doreen Virtue

Buy Online or Telephone 01409 254144
Barnstaple Pannier Market every Tuesday
Devon & Cornwall Pagan Federation Conference
Mind, Body Spirit Fayres
(see website for Calendar of Events)

All major credit/debit cards and PayPal accepted
Prices shown exclude postage and packaging



Pagan Federation

Devon, Cornwall & Channel Isles Spring Conference 2010

Saturday 6th March 2010, Penstowe Manor, Bude

Friday night: Music with **Damh the Bard** 8.00pm

Saturday Speakers:

Peter Knight The Wessex Astrum

Peter Grey & Alkistis Dimech Babalon and the Witchcraft

Kit Berry Writing Stonewylde

Cassandra Latham & Penglaz

Closing with **Merv Davey**, Cornish Piper

Raffle and 'Spirits of Place' Competition: Create an object/ totem/ talisman/
fetish/ artefact to
express a genius loci or personal connection to place!

Saturday Evening Music with **The Dolmen** from 8.00pm
And **DJ Graham Barter**

Tickets: PF members £15, non members £18 available by post or
PayPal.

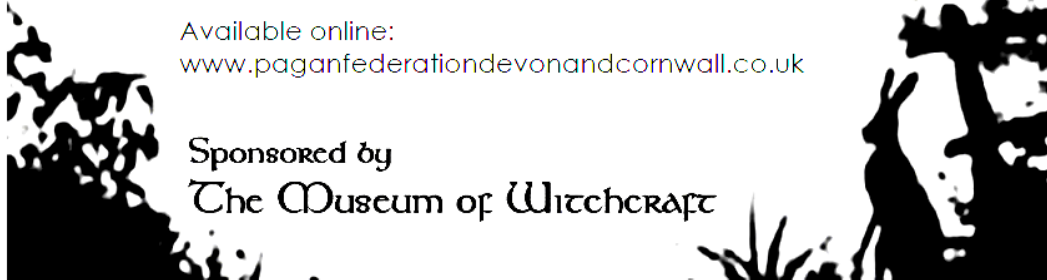
Send SSAE for return of ticket/s with cheque/P.O. made payable to
'Pagan Federation Devon & Cornwall'. Please include membership
number/s of PF members & names of guests.

**Pagan Federation Devon, Cornwall & Channel Isles
(Regional Conference)**
PO Box 314, Exeter, Devon, Ex4 6YR

Available online:

www.paganfederationdevonandcornwall.co.uk

Sponsored by
The Museum of Witchcraft





For all the latest news and updates around the Region,
try the new look Regional PF Website at:

www.paganfederationdevonandcornwall.co.uk